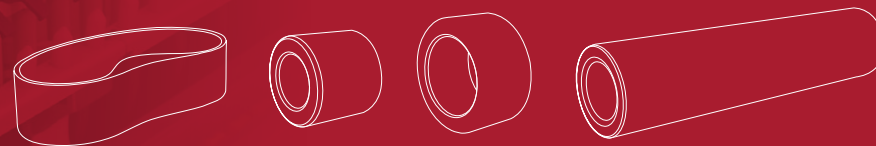


Product Catalogue

Cots and Aprons



SINCE 1970



asteks®

ASTEKS has been active in textile industry since 1970 , strictly adhering to the starting values, it has combined its experience gained throughout the years, with contemporary technology and carried this combination up until today. The production takes place in Istanbul / Türkiye at its modern factory having 8.500 m2 close area in 11.000 m2 open land.

Asteks, who has reliability in both domestic and international markets by it's products manufactured in terms of ISO 9001:2015 quality management system, continuous to be active as a corporate minded company utilizing new technologies and applying modern management approaches. The company has major dominant market share in Türkiye and also exports to around 30 countries including Uzbekistan, Pakistan, Bangladesh, Turkmenistan, Germany,Indonesia, Egypt, Azerbaijan, China, Greece and France. Asteks's products are preferred by not only the spinners but also by the spinning machinery manufacturers on a global scale.

Addition to its decent quality cots&aprons , it offers comprehensive solutions to spinning factories by its production of process machinery and equipment taking place in roller covering shops such as Cots Grinding Machines , Cots De-mounting&Mounting devices, Rubber Cots Surface Treatment by UV, Cots Surface Roughness (Ra) Testing Device, Conicity Testing Device , Eccentricity Testing Device , Shore Hardness Measuring Device, etc.

Türkiye

since
1970

TÜV
AUSTRIA

CE



Teknoloji



Extrusion technology is used within aprons and cots production. This technology not only provides a homogeneous rubber mixture, but also by the multi-layers filtration system, the entire unwanted substances are eliminated from the rubber mixture. Therefore perfect products surfaces are achieved after rectification. Moreover, by the production method unique to Asteks, the variation in apron thickness is improved to limit down to the level of $\pm 0,02$ mm tolerance. This, in return, helps better yarn quality values (thin places, thick places) to be achieved.



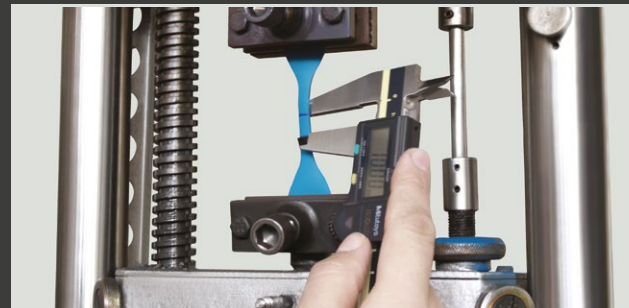
Human Resources

For the design of the rubber formulations and the monitoring of the production processes require well-trained and experienced human resources. In Asteks, the most important asset is our specialised human resources. Our tailor-made service up to the expectations of our customers is provided by 150 employees, including specialists in their field.

User Feedback and R&D



Keeping close contact with the end-users, conveying the data provided by our customers to our R&D department, our production processes are led in accordance with the end-users' requirements.



SHORT STAPLE SPINNING	4
LONG STAPLE SPINNING	7
OPEN END SPINNING	9
COMPACT SPINNING	10
AIR JET SPINNING	13
TEXTURING	14
CARDED WOOL SPINNING	15

The Standards in Raw Material

In terms of maintaining consistency in quality offered we have been in long term contracts with the suppliers ,whose competences are proved by the certifications, for all the components related. All raw materials are tested according to the ISO 9001:2015 Quality Management System before they are taken in production, throughout time. This is how the consistency in the quality of the raw materials and the components related is maintained

Short Staple Spinning

RING SPINNING FRAMES



POSITION:
PRODUCT CODE:
FIBRE TYPE:
YARN COUNT Ne:
ADDITIONAL FEATURES:

TOP APRON
NT-86/S
ALL
ALL

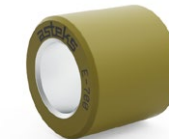
TOP APRON
OPTIMA
COTTON
ALL

TOP APRON
NT-SOFT
COTTON
ALL
ELECTROLYTIC

BOTTOM APRON
NT-86/S
ALL
ALL
*Optional Knurled inner layer

BOTTOM APRON
OPTIMA
COTTON
Ne 30 and finer
*Optional Knurled inner layer

BOTTOM APRON
NT-SOFT
COTTON
Ne 30 and finer
*Optional Knurled inner layer



POSITION:
PRODUCT CODE:
FIBRE TYPE:
YARN COUNT Ne:
SHORE 'A':
ADDITIONAL FEATURES:

BOTTOM APRON
CTA
SYNTHETIC & BLEND
ALL
REINFORCED SURFACE WITH CARBON
*Optional Knurled inner layer

OPEN/SKIVED APRON and ADHESIVE
NT-86/S
ALL
ALL

NEW
FRONT COT
TA-631
COTTON
Ne 50 and finer
63°

FRONT COT
TE-650
COTTON
Ne 30 and finer
65°

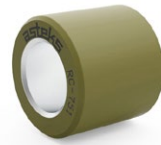
NEW
FRONT COT
CE-684
COTTON
Ne 20 and finer
68°

NEW
FRONT COT
E-700
MODAL & COTTON
ALL
68°

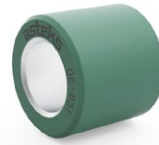
RING SPINNING FRAMES



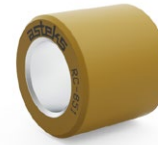
POSITION: FRONT COT
PRODUCT CODE: E-682
FIBRE TYPE: COTTON
YARN COUNT Ne: Ne 20 and finer
SHORE A: 68°



NEW
POSITION: FRONT COT
PRODUCT CODE: RC-751
FIBRE TYPE: BLENDS
YARN COUNT Ne: Ne 30 and finer
SHORE A: 75°



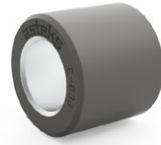
POSITION: FRONT COT
PRODUCT CODE: OE-851
FIBRE TYPE: SYNTHETIC BLENDS
YARN COUNT Ne: ALL
SHORE A: 85°



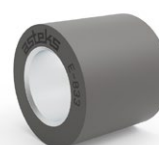
NEW
POSITION: FRONT COT
PRODUCT CODE: RC-851
FIBRE TYPE: SYNTHETIC BLENDS
YARN COUNT Ne: ALL
SHORE A: 85°



POSITION: FRONT & BACK COT
PRODUCT CODE: K-751
FIBRE TYPE: ALL
YARN COUNT Ne: ALL
SHORE A: 75°



POSITION: FRONT & BACK COT
PRODUCT CODE: E-833
FIBRE TYPE: ALL
YARN COUNT Ne: ALL
SHORE A: 83°



POSITION: APRON CRADLE ROLLER
PRODUCT CODE: E-833
FIBRE TYPE: ALL
YARN COUNT Ne: ALL
SHORE A: 83°

On demand , 67.8, 72.5, 77.2, 79 mm and many others inner diameter aprons are able to be produced in accordance with the customers' requirements

ROVING FRAMES



POSITION: TOP APRON
PRODUCT CODE: NT-86/S
FIBRE TYPE: ALL
YARN COUNT Ne: ALL
SHORE A:



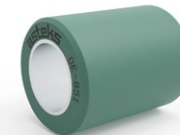
POSITION: BOTTOM APRON
PRODUCT CODE: NT-86/S
FIBRE TYPE: ALL
YARN COUNT Ne: ALL



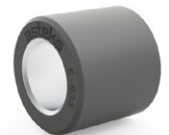
POSITION: OPEN/SKIVED APRON and ADHESIVE
PRODUCT CODE: NT-86/S
FIBRE TYPE: ALL
YARN COUNT Ne: ALL



NEW
POSITION: FRONT & BACK COT
PRODUCT CODE: E-750
FIBRE TYPE: COTTON
YARN COUNT Ne: FINE COUNT
SHORE A: 75°



POSITION: FRONT & BACK COT
PRODUCT CODE: OE-851
FIBRE TYPE: COTTON
YARN COUNT Ne: ALL
SHORE A: 85°



POSITION: FRONT & BACK ROLLER
PRODUCT CODE: E-833
FIBRE TYPE: COTTON
YARN COUNT Ne: ALL
SHORE A: 83°



COMBING FRAMES

ROVING - DRAWING FRAMES



NEW

DETACHING ROLLER

PRODUCT CODE:
HG-650

FIBRE TYPE:
COTTON

YARN COUNT №:
ALL

SHORE A:
65°



DETACHING ROLLER

PRODUCT CODE:
TE-650

FIBRE TYPE:
COTTON

YARN COUNT №:
ALL

SHORE A:
65°



NEW

DETACHING ROLLER

PRODUCT CODE:
FIX-7 (MULTI LAYERS)

FIBRE TYPE:
COTTON

YARN COUNT №:
ALL



NEW

DRAW BOX

PRODUCT CODE:
E-750

FIBRE TYPE:
ALL

YARN COUNT №:
ALL

SHORE A:
75°

ADDITIONAL FEATURES:
LATE CONTAMINATION



NEW

FRONT COT

PRODUCT CODE:
HG-650

FIBRE TYPE:
ALL

YARN COUNT №:
ALL

SHORE A:
65°

ADDITIONAL FEATURES:
LATE CONTAMINATION



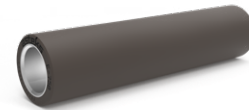
TOP and BOTTON CLEARER

PRODUCT CODE:
SH-86

FIBRE TYPE:
ALL

YARN COUNT №:
ALL

DRAWING FRAMES



NEW

DRAW BOX

PRODUCT CODE:
E-750

FIBRE TYPE:
COTTON

YARN COUNT №:
ALL

SHORE A:
75°

ADDITIONAL FEATURES:
LATE CONTAMINATION



NEW

DRAW BOX

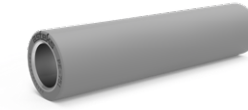
PRODUCT CODE:
HG-650

FIBRE TYPE:
COTTON

YARN COUNT №:
ALL

SHORE A:
65°

ADDITIONAL FEATURES:
LATE CONTAMINATION



NEW

DRAW BOX

PRODUCT CODE:
PE-751

FIBRE TYPE:
BLENDS

YARN COUNT №:
ALL

SHORE A:
75°

ADDITIONAL FEATURES:
LATE CONTAMINATION



NEW

DRAW BOX

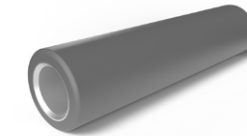
PRODUCT CODE:
RC-851

FIBRE TYPE:
SYNTHETIC & BLENDS

YARN COUNT №:
ALL

SHORE A:
85°

ADDITIONAL FEATURES:
LATE CONTAMINATION



DRAW BOX

PRODUCT CODE:
E-833

FIBRE TYPE:
ALL

YARN COUNT №:
ALL

SHORE A:
83°



DRAW BOX

PRODUCT CODE:
OE-851

FIBRE TYPE:
ALL

YARN COUNT №:
ALL

SHORE A:
85°

TWISTING MACHINES



ON DRUM FRICTION ROLLERS

PRODUCT CODE:
STR-1

FIBRE TYPE:
ALL

YARN COUNT №:
ALL

SHORE A:

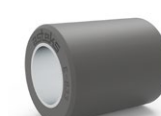


ON DRUM FRICTION ROLLERS

PRODUCT CODE:
STR-2

FIBRE TYPE:
ALL

YARN COUNT №:
FINE COUNT



DRAW BOX

PRODUCT CODE:
E-833

FIBRE TYPE:
ALL

YARN COUNT №:
ALL

SHORE A:
83°

CARDING MACHINES

Long Staple Spinning

RING SPINNING FRAMES



POSITION: TOP APRON

PRODUCT CODE: NT-86/S

FIBRE TYPE: ALL

YARN COUNT Ne: ALL

SHORE A: ALL

ADDITIONAL FEATURES:



POSITION: BOTTOM APRON

PRODUCT CODE: NT-86/S

FIBRE TYPE: ALL

YARN COUNT Ne: ALL



POSITION: OPEN/SKIVED APRON and ADHESIVE

PRODUCT CODE: NT-86/S

FIBRE TYPE: ALL

YARN COUNT Ne: ALL



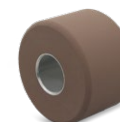
POSITION: FRONT-BACK ROLLER

PRODUCT CODE: N-831

FIBRE TYPE: ALL

YARN COUNT Ne: ALL

SHORE A: 83°



POSITION: FRONT ROLLER

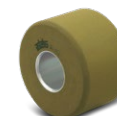
PRODUCT CODE: K-751

FIBRE TYPE: WOOL

YARN COUNT Ne: ALL

SHORE A: 75°

ADDITIONAL FEATURES: ELECTROLYTIC



POSITION: FRONT ROLLER

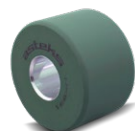
PRODUCT CODE: E-700

FIBRE TYPE: WOOL

YARN COUNT Ne: FINE COUNT

SHORE A: 68°

ADDITIONAL FEATURES: ELECTROLYTIC



POSITION: FRONT ROLLER

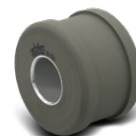
PRODUCT CODE: OE-851

FIBRE TYPE: BLENDS

YARN COUNT Ne: ALL

SHORE A: 85°

ADDITIONAL FEATURES: ELECTROLYTIC



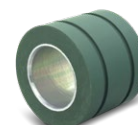
POSITION: APRON CRADLE ROLLER

PRODUCT CODE: N-831

FIBRE TYPE: ALL

YARN COUNT Ne: ALL

SHORE A: 83°



POSITION: FRONT ROLLER

PRODUCT CODE: OE-851

FIBRE TYPE: ALL

YARN COUNT Ne: ALL

SHORE A: 85°

ADDITIONAL FEATURES: ELECTROLYTIC



POSITION: RUBBING APRONS

PRODUCT CODE: CH-778

FIBRE TYPE: ALL

YARN COUNT Ne: ALL

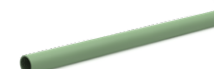


POSITION: RUBBING HOSE

PRODUCT CODE: CH-701

FIBRE TYPE: ALL

YARN COUNT Ne: ALL



POSITION: TOP and BOTTOM CLEARER

PRODUCT CODE: SH-86

FIBRE TYPE: ALL

YARN COUNT Ne: ALL

FINISSEUR FRAMES

FINISSEUR FRAMES - PREPARATION

RING - FINISSEUR FRAMES



POSITION:
PRODUCT CODE:
THICKNESS:
WIDTH:
SHORE°A:

BALLOON CONTROL COTS
K-1/68
1,4 mm
68/53/43 mm
75°

BALLOON CONTROL COTS
K-2/68
1,6 mm
68/53/43 mm
75°

BALLOON CONTROL COTS
K-3/68
1,8 mm
68/53/43 mm
75°

BALLOON CONTROL COTS
K-4/68
2,0 mm
68/53/43 mm
75°

BALLOON CONTROL COTS
N-3/68
1,8 mm
68/53/43 mm
83°



POSITION:
PRODUCT CODE:
THICKNESS:
WIDTH:
SHORE°A:

BALLOON CONTROL COTS
N-4/68
2,0 mm
68/53/43 mm
83°

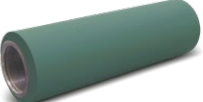
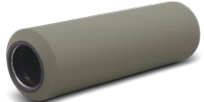
BALLOON CONTROL COTS
K-2/30
1,6 mm
30 mm
75°

BALLOON CONTROL COTS
K-4/32
2,0 mm
32 mm
75°

BALLOON CONTROL COTS
Y-1/57
1,4 mm
57 mm
70°

BALLOON CONTROL COTS
Y-2/57
1,6 mm
57 mm
70°

DRAFTING MACHINES



POSITION:
PRODUCT CODE:
FIBRE TYPE:
YARN COUNT №:
SHORE°A:

DRAFTING ROLLERS
SGC-831
ACRYLIC
ALL
83°

DRAFTING ROLLERS
OE-851
POLYESTER - POLYAMIDE
ALL
85°

DRAFTING ROLLERS
E-700
WOOL
ALL
68°

DRAFTING ROLLERS
SGC-831
ACRYLIC
ALL
83°

DRAFTING ROLLERS
OE-851
ALL
ALL
85°

ADDITIONAL FEATURES:

ELECTROLYTIC

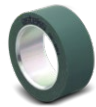
ELECTROLYTIC

FINISSEUR FRAMES



Open End Spinning

OPEN END SPINNING FRAMES



POSITION:
PRODUCT CODE:
FIBRE TYPE:
YARN COUNT Ne:
SHORE A:

TAKE-UP ROLLER
OE-851
ALL
ALL
85°



TAKE-UP ROLLER
E-833
ALL
ALL
83°



TAKE-UP ROLLER
E-682
COTTON
FINE COUNT
68°



ON WINDING DRUMS
STR-2
ALL
ALL

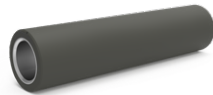


DRAWING FRAMES



POSITION:
PRODUCT CODE:
FIBRE TYPE:
YARN COUNT Ne:
SHORE A:

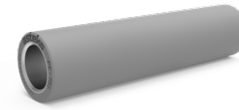
DRAW BOX
OE-851
ALL
ALL
85°



DRAW BOX
E-833
ALL
ALL
83°



NEW
DRAW BOX
E-750
COTTON
MEDIUM COUNT
75°
LATE CONTAMINATION



NEW
DRAW BOX
PE-751
SYNTHETIC - BLEND
MEDIUM&FINE COUNT
75°
LATE CONTAMINATION



TOP and BOTTON CLEARER
SH-86
ALL
ALL

ADDITIONAL FEATURES:

Compact Spinning

RING SPINNING FRAMES



POSITION:	TOP APRON	TOP APRON	BOTTOM APRON	NEW BOTTOM APRON	OPEN/SKIVED APRON and ADHESIVE
PRODUCT CODE:	NT-86/S	NT-SOFT	NT-86/S	S/SOFT PERFORMANCE	NT-86/S
FIBRE TYPE:	ALL	COTTON	ALL	COTTON	ALL
YARN COUNT Ne:	ALL	Ne 30 and finer	ALL	Ne 30 and finer	ALL
ADDITIONAL FEATURES:		ELECTROLYTIC		ELECTROLYTIC PERFORMANCE TYPE INNER LAYER	



POSITION:	PERFORATED APRON	PERFORATED APRON	PERFORATED APRON	PERFORATED APRON	PERFORATED APRON
PRODUCT CODE:	GESA-1 OPS PERFORMANCE	GESA-2 OPS PERFORMANCE	GESA-3 OPS PERFORMANCE	GESA-4 OPS PERFORMANCE	GESA-5 OPS PERFORMANCE
FIBRE TYPE:	ALL	ALL	ALL	WOOL and BLENDS	WOOL and BLENDS-SIRO
YARN COUNT Ne:	ALL	ALL	ALL	ALL	ALL
FEATURES:	Ø 43,5 X 19,9 - 70 mm Gauge	Ø 43,5 X 19,9 - 70 mm Gauge	Ø 43,5 X 19,9 - 75 mm Gauge	Ø 52,7 X 19,9 - 82,5 mm Gauge	Ø 52,7 X 19,9 - 82,5 mm Gauge



RING SPINNING FRAMES



NEW

POSITION:
PRODUCT CODE:
FIBRE TYPE:
YARN COUNT Ne:
FEATURES:

PERFORATED APRON

GESA-7 OPS PERFORMANCE

COTTON-SIRO

ALL

Ø 43,5 X 19,9 - 75 Gauge



PERFORATED APRON

GESA-8 OPS PERFORMANCE

ALL

ALL

Ø 52,7 X 17,5 - 82,5 Gauge



PERFORATED APRON

GESA-12 CTA PERFORMANCE

SYNTHETIC and BLENDS

ALL

Ø 43,5 X 19,9 - 70 Gauge



PERFORATED APRON

GESA-19 OPS PERFORMANCE

COTTON

FINE COUNT

Ø 43,5 X 17 - 70 Gauge



POSITION:
PRODUCT CODE:
DIMENSION:
MESH PER INCH:
MESH cm²:
YARN COUNT Ne:
TYPE OF THE SYSTEM:

LATTICE APRON

T-1

114 X 24 / 36,3

118

2100

Ne 30-80

SUESSEN

LATTICE APRON

T-2

114 X 25 / 36,3

80

1440

ALL

SUESSEN

LATTICE APRON

T-4

136 X 24 / 43,3

80

1000

ALL

PINTER

LATTICE APRON

T-5

124 X 17 / 39,4

140

3000

Ne 40-80

TOYOTA RX-240

LATTICE APRON

T-6

114 X 25 / 36,3

118

2100

Ne 20-60

SUESSEN



POSITION:
PRODUCT CODE:
DIMENSION:
MESH PER INCH:
MESH cm²:
YARN COUNT Ne:
TYPE OF THE SYSTEM:

LATTICE APRON

T-7

131 X 23,5 / 41,7

118

2100

Ne 20-60

YUHUA

LATTICE APRON

T-9

143 x 20 / 45,7

100

1600

Ne 20-60

TOYOTA RX-300

LATTICE APRON

T-10

136 x 18 / 43,3

140

3000

Ne 40-80

ZINSER

LATTICE APRON

T-11

165,5 x 18 / 52,7

1460

ALL

Ne 12-180

LAKSHMI

LATTICE APRON

T-12

136 x 20 / 43,3

140

3000

Ne 40-80

ZINSER

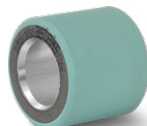
RING SPINNING FRAMES



POSITION:	LATTICE APRON	LATTICE APRON	LATTICE APRON	LATTICE APRON
PRODUCT CODE:	T-13	T-14	T-15	T-16
DIMENSION (mm):	136 x 17 / 43,3	117 x 25 / 37,5	114 x 25 / 36,3	130,3 x 18 / 41,5
MESH PER INCH:	140	80	145	150
MESH cm²:	3000	980	3200	3500
YARN COUNT Ne:	Ne 40-80	Ne 10-60	Ne 50-80	Ne 30 and finer
TYPE OF THE SYSTEM:	ZINSER	WORSTED	SUESSEN	LAKSHIMI

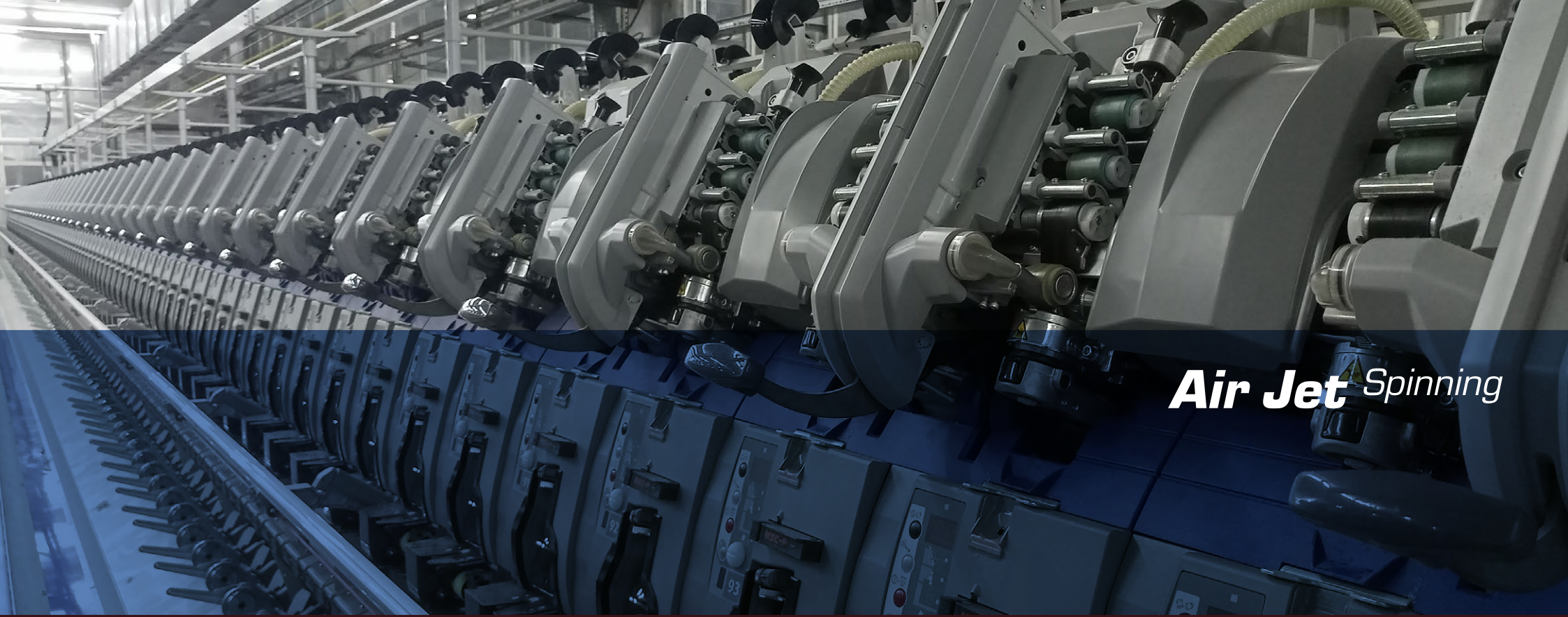


POSITION:	COMPACT DRAFTING ROLLER	COMPACT DRAFTING ROLLER	COMPACT DRAFTING ROLLER	COMPACT DRAFTING ROLLER
PRODUCT CODE:	TA-631	TE-650	E-700	CE-684
FIBRE TYPE:	COTTON	COTTON	VISCOSE / COTTON	COTTON
YARN COUNT Ne:	Ne 50 and finer	Ne 30 and finer	ALL	Ne 20 and finer
SHORE A:	63°	65°	68°	68°



POSITION:	BACK COT	BACK COT	COMPACT DRAFTING ROLLER	COMPACT DRAFTING ROLLER	COMPACT DRAFTING ROLLER
PRODUCT CODE:	E-682	K-751	FIX-6	FIX-7	FIX-8
FIBRE TYPE:	COTTON	ALL	COTTON	COTTON	COTTON
YARN COUNT Ne:	Ne 20 and finer	ALL	FINE COUNT	Ne 30 and finer	ALL
SHORE A:	68°	75°			





Air Jet Spinning

AIR-JET SPINNING FRAMES

					
NEW	NEW	NEW	NEW	NEW	NEW
POSITION: BOTTOM APRON	POSITION: BOTTOM APRON	POSITION: TOP APRON	POSITION: FRONT ROLLER	POSITION: FRONT ROLLER	POSITION: BACK COT
PRODUCT CODE: TK-751/ E-833	PRODUCT CODE: CTA	PRODUCT CODE: TK-751	PRODUCT CODE: RC-851	PRODUCT CODE: RC-751	PRODUCT CODE: RC-751
FIBRE TYPE: ALL	FIBRE TYPE: ALL	FIBRE TYPE: ALL	FIBRE TYPE: ALL	FIBRE TYPE: COTTON - VISCOSE	FIBRE TYPE: ALL
YARN COUNT No: ALL	YARN COUNT No: ALL	YARN COUNT No: ALL	YARN COUNT No: ALL	YARN COUNT No: ALL	YARN COUNT No: ALL
SHORE A: 85°	SHORE A: 75°	SHORE A: 75°	SHORE A: 75°	SHORE A: 75°	SHORE A: 75°
ADDITIONAL FEATURES: ELECTROLYTIC	ADDITIONAL FEATURES: ELECTROLYTIC	ADDITIONAL FEATURES: ELECTROLYTIC			

Texturing

TEXTURING MACHINES



POSITION:
PRODUCT CODE:
FIBRE TYPE:
YARN COUNT Td:
SHORE 'A':

APRON

TK-751

ALL

ALL



APRON

S/TE-682

ALL

FINE



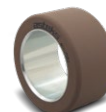
NIP ROLLER

E-682

ALL

FINE

68°



NIP ROLLER

K-751

ALL

ALL

75°



NIP ROLLER

E-833

ALL

COARSE

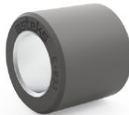
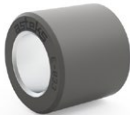
83°





Carded Wool *Spinning*

RING SPINNING FRAMES



POSITION:	BOTTOM & TOP	FRONT ROLLER	FRONT & BACK ROLLER	FRONT & BACK ROLLER
PRODUCT CODE:	NT-86/S	E-682	E-833	E-833
FIBRE TYPE:	ALL	WOOL	ALL	ALL
YARN COUNT №:	ALL	ALL	ALL	ALL
ADDITIONAL FEATURES:		68°	83°	83°

What is your choice?

COTS GRINDING MACHINES



asteks 401SF&M

*With Smart Feeding System &
Two Independent Grinding Units & Multi Functional*



asteks 402SF

*With Smart Feeding System &
Two Independent Grinding Units & Double Capacity*



asteks 403SF&M

*With Smart Feeding System &
Three Independent Grinding Units & Multi Functional –
Double Capacity*



asteks 201AF

*With Magazine Type Automatic
Feeding System & Multi Functional*



asteks 201MTL

*Manual Feeding – Texturing
Diameter Measurement by Laser*



asteks 201M

*Manual Feeding &
Multi Functional*



asteks 201AF&M

*With Magazine Type Automatic Feeding System &
Two Independent Grinding Units & Multi Functional*

AUXILIARIES AT ROLLER COVERING SHOP



UV-305
COTS SURFACE TREATMENT BY UV
Smart Feeding System &
Combined Continuous Process with
Cots Grinding (Optional)



UV-302
COTS SURFACE TREATMENT
BY UV - Manual Feeding &
Multi Functional



TOP ROLLER
GREASING MACHINE Automatic Type



FLOCK ROLLER
CLEANING MACHINE
WITH AUTOMATIC FEEDING



TOP ROLLERS CARRIAGE



COTS DE-MOUNTING & MOUNTING
EQUIPMENT MANUAL TYPE
(mainly for short cots for ring spinning, roving,
open-end spinning machines)



COTS DE-MOUNTING & MOUNTING
EQUIPMENT PNEUMATIC TYPE
(mainly for short cots for ring spinning, roving,
open-end spinning machines)



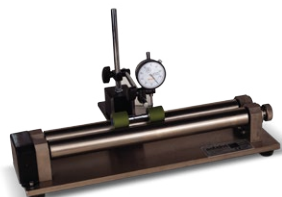
COTS DE-MOUNTING & MOUNTING
EQUIPMENT HYDRAULIC TYPE
HORIZONTAL DESIGN
(mainly for long cots for drawing,
combing, lap forming machines)



COTS DE-MOUNTING & MOUNTING
EQUIPMENT HYDRAULIC TYPE VERTICAL DESIGN
(mainly for bigger size cots for texturing,
long stable spinning systems)



TOP ROLLER
GREASING DEVICE (MANUAL)



TOP ROLLER ECCENTRICITY
MEASURING DEVICE



TOP ROLLER CONICITY
MEASURING DEVICE



COTS SURFACE ROUGHNESS
(Ra) TESTING DEVICE



asteks 101AGV

AUTOMATIC GUIDED VEHICLES

Moreover, ask them about us



“We produce trust”





asteks®

Yakuplu Mahallesi, Hürriyet Bulvarı,
No:2/4 PK 34524
Beylikdüzü, İstanbul / TÜRKİYE

Phone: +90 212 875 11 00 pbx

Fax: +90 212 875 11 06

info@asteks.com

www.**asteks**.com